

Mission report

SPQR Rescue Team

1st July 2004

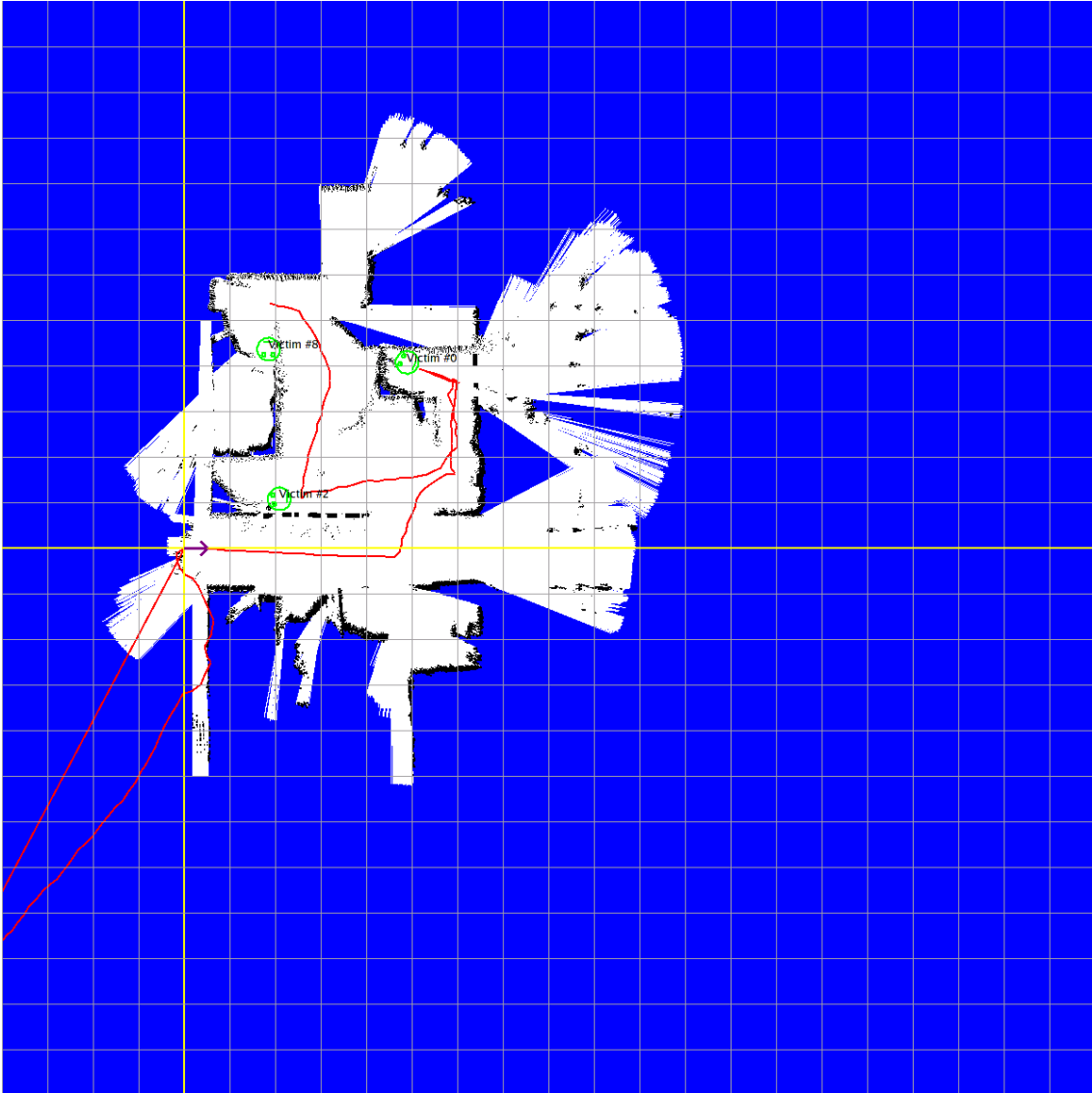
Contents

1	Report	2
1.1	Complete map and robot path	2
1.2	Report for victim 0	3
1.2.1	Victim summary	3
1.2.2	Victim snapshots	3
1.2.3	Victim position	4
1.3	Report for victim 2	5
1.3.1	Victim summary	5
1.3.2	Victim snapshots	5
1.3.3	Victim position	6
1.4	Report for victim 8	7
1.4.1	Victim summary	7
1.4.2	Victim snapshots	7
1.4.3	Victim position	8

1 Report

1.1 Complete map and robot path

Map containing all victim founds. Robot path is shown in red. Victims shown in green were found by automatic detection algorithm (and then confirmed by operator). Victims shown in magenta were added by the operator.



1.2 Report for victim 0

1.2.1 Victim summary

Victim found on coordinates 4890.21 4078.54 2.7329 relative to start position.

info	algorithm	operator
confirmed	1	1
tag	null	null
situation	Trapped	Trapped
status	StatusUnknown	StatusUnknown
form	null	null
heat	null	null
sound	null	null

1.2.2 Victim snapshots



Snapshot of victim 0 according to operator.



Snapshot of victim 0 according to algorithm.

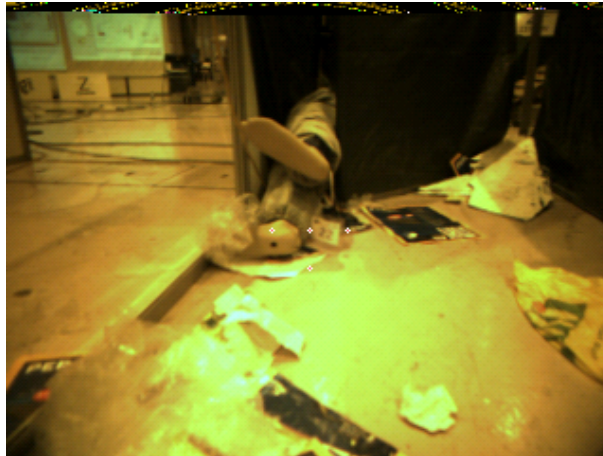
1.3 Report for victim 2

1.3.1 Victim summary

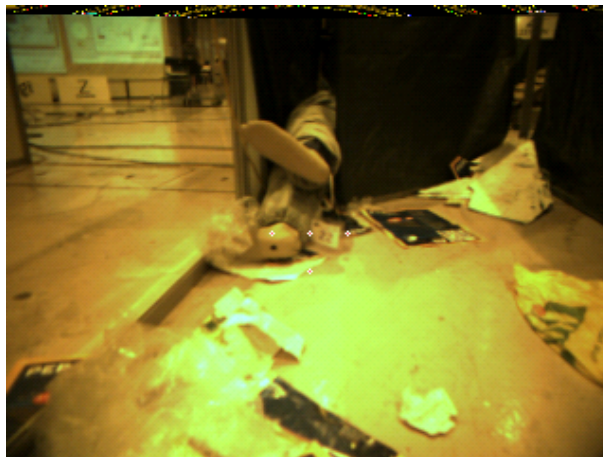
Victim found on coordinates 2083.13 1081.18 -2.98083 relative to start position.

info	algorithm	operator
confirmed	1	1
tag	null	null
situation	Trapped	Trapped
status	StatusUnknown	StatusUnknown
form	null	null
heat	null	null
sound	null	null

1.3.2 Victim snapshots



Snapshot of victim 2 according to operator.



Snapshot of victim 2 according to algorithm.

1.4 Report for victim 8

1.4.1 Victim summary

Victim found on coordinates 1849.12 4364.21 -1.57394 relative to start position.

info	algorithm	operator
confirmed	1	1
tag	null	null
situation	Unknown	Unknown
status	StatusUnknown	StatusUnknown
form	null	null
heat	null	null
sound	null	null

1.4.2 Victim snapshots



Snapshot of victim 8 according to operator.



Snapshot of victim 8 according to algorithm.

